



Tosca Smartbox 1208

The smarter choice for bulk transport

Ideal for dry bulk food or non-food, this foodgrade virgin HDPE euro size heavy duty Folding Large Container (FLC) saves space in your warehouse and during return transport, ultimately resulting in lower costs and a reduced carbon footprint.

Its durable structure and skids ensure strength and stability throughout the supply chain. Designed for safe and easy handling while folding and unfolding, an ergonomic dropdoor on the long side of the container allows for easy picking.

Design & Features



Increase efficiency with space savings

This food grade virgin HDPE Euro size heavy duty folding container saves space in your warehouse and during return transport.



Handle containers safely and easily

Designed for safe and easy handling while folding and unfolding, an ergonomic drop door on the long side of the container allows for easy picking.



Meet PPWR and EPR regulations with reusable containers

100% recyclable at end of life and PPWR-compliant.



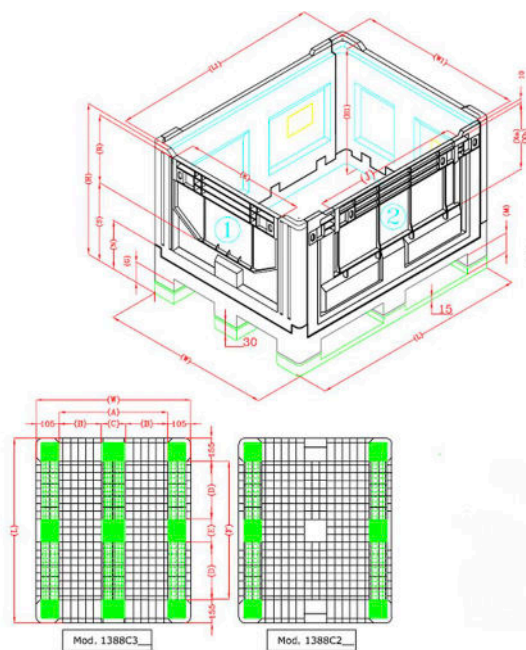
Scan this QR to **discover more** about this product.

Specifications

Characteristics	
Colour	Ivory/Black
Runners	2
Lid	Included
Drop door	Yes
Bottom discharge	No
Material	HDPE
Foodgrade	Yes
ISPM-15 proof	Yes
Temperature range	-20°C/+40°C



Technical Drawing



MODEL		Mod. 1388C3	Mod. 1388C2	Mod. 1388C4
EXTERNAL DIMENSIONS (W,L,H)	mm	800x1200x805	800x1200x805	800x1200x800
INTERNAL DIMENSIONS (W1,L1,H1)	mm	720x1120x660	720x1120x660	720x1120x660
A	mm	590	590	590
B	mm	222	—	—
C	mm	146	—	—
D	mm	372	372	—
E	mm	146	146	—
F	mm	890	890	890
G	mm	105	105	100
M	mm	90	90	—G
N	mm	298	298	293
S	mm	435	435	435
R	mm	360	360	360
K	mm	450	450	450
J	mm	855	855	855
Xa	mm	360	360	360
Xb	mm	270	270	270
Gross weight (*) (@)	Kg	44	41	38
Volume	Kg	565	565	565
Max Loading (dynamic)	Kg	(#)650 a 23°C	(#)650 a 23°C	(#)650 a 23°C
Stacking loading (max)	Kg	7000 a 23°C	7000 a 23°C	7000 a 23°C

Disclaimer

- Temperature ranges, dimensions, weights, volumes and loading capacities listed are estimates and may vary due to handling, manufacturing tolerances, and regulatory differences. Any deviation from the specified temperature range must be confirmed with Tosca.
- Users must assess product suitability and conduct appropriate risk assessments before use.
- All users must follow Tosca's specifications and Health & Safety Guidelines and use outside these parameters is at the user's risk.