



Minimize Replenishment Costs with this Retail-Ready Pallet

Our lightweight, reusable 1/2 pallet reduces replenishment time and saves space. Featuring an easy and secured stacking system, the 1/2 pallet maximizes truck and storage space in transit. It accommodates various beverage trays and crates, both foldable and nesting.



Efficient

Uniquely designed to replace traditional shelving, eliminating both the time & cost of merchandising.



Durable

This durable, long-lasting product supports many years of use without breaking down or splintering.



Product Availability

Simple and easy restocking ensure maximum product availability for customers and more sales.

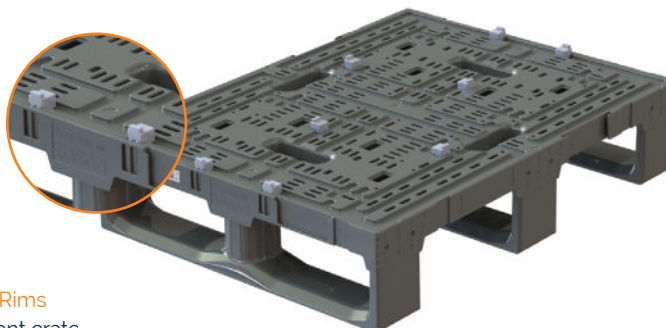
Features and Specifications

Optional Popup system

Secures your trays and crates on demand

Flat Surface

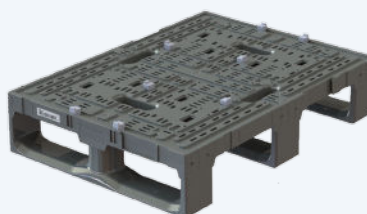
For flat goods



Side Rims

Prevent crate from slipping

Smart pallets enable you to benefit from the value of data and insights



1/2 Pallet

Height	6.5 in
Length	31.50 in
Width	23.62 in
Distance btw skids	23.62 in
Distance btw skids (short side)	9.84 in
Weight	15.43 lbs